

LUT-VDI portal – How to use virtual desktops and many applications remotely

Introduction

From the portal you can access and use for example LUT/LAB computer classroom programs remotely for example with your home computer. Some programs can be run straight from the portal, but due to technical or licensing limitations some programs are installed on virtualized Windows desktops, which you need to start before accessing the programs inside the desktop.

Be aware that there are limited number of desktops available, and some programs might have limited number of licenses. Due to these limitations, there might come situations, where desktops or programs are not available. Some programs might also be available only on campus area due to licensing restrictions. You can access them from for example computer classroom, from library computers or by using Eduroam wireless network with your own computer.

There are three ways to access LUT-VDI portal resources:

- **With a web browser and VMware Horizon Client**
- **Using VMware Horizon Client only**
- **With a web browser without VMware Horizon Client** (*consider this as a last option if VMware Horizon Client cannot be installed or is not working properly*)

Installing and using VMware Horizon Client is a recommended way to use portal resources instead of using a web browser without VMware Horizon Client installed. You cannot for example access your host computers resources without VMware Horizon Client installed on your computer.

VMware Horizon Client is available for Windows, Linux, macOS, iOS, Android, and Chrome OS devices.

Please log off from desktop or close the program after you are finished using it. By logging off you ensure that you will instantly free the used software licenses for next user.

Contents

Introduction	1
Installing VMware Horizon Client	3
Using LUT-VDI web portal with a browser and VMware Horizon Client	4
Using LUT-VDI resources with VMware Horizon Client only	6
Using LUT-VDI resources with a web browser without VMware Horizon Client.....	8
Additional info.....	11
Connecting and using USB devices in VMware Horizon Client.....	11
Share a folder from your host computer to a program or a virtual desktop.....	13
Changing display settings on virtual desktops	14

Installing VMware Horizon Client

VMware Horizon Client is installed on classroom computers and it can be installed on your LUT owned work computer from Software Center (icon on desktop). For your personal computer or mobile device, it can be downloaded and installed from the link below:

<https://www.vmware.com/go/viewclients>

Your computer might restart automatically after the installation, so make sure your documents are saved which you are working with.

Documentation for VMware Horizon Clients can be accessed from the link below:

<https://docs.vmware.com/en/VMware-Horizon-Client/index.html>

Using VMware Horizon Client is recommended way to launch LUT-VDI resources. With VMware Horizon Client you can use your local printer and have access to local computer disk drives and USB flash drives from LUT-VDI virtual desktops or programs. You can also open resources inside the browser, but it has many restrictions and user experience is not as good than with Horizon Client.

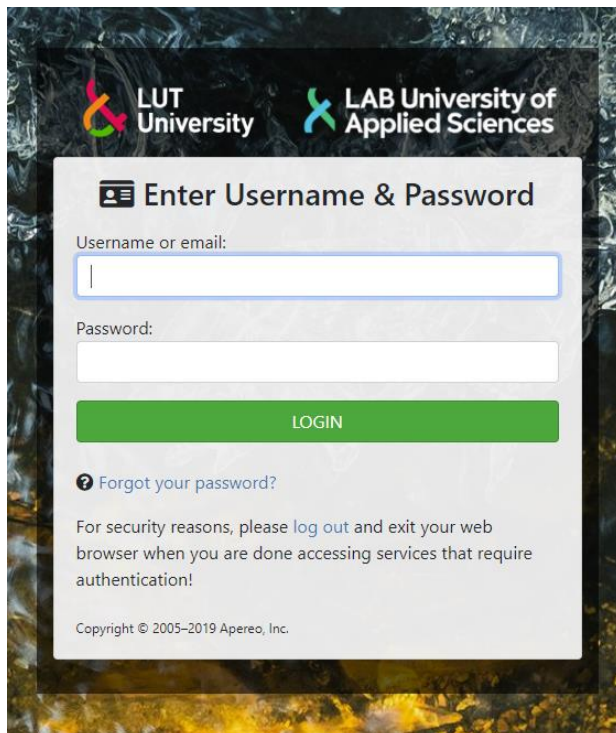
Using LUT-VDI web portal with a browser and VMware Horizon Client

If you are using a LUT/LAB computer in campus network or VPN connection

- Navigate to address <https://one.lut.fi/> and you should get automatically signed in to the portal without entering your username or password

If you are outside of campus network, like for example at home or using [Eduroam](#)

- Navigate to address <https://one.lut.fi/>



Enter your username or email address and password and click “Login”. You will be redirected to LUT-VDI portal.

Categories

Q Search apps

All Apps

Virtual

Apps

LAB virtual desktops

LUT virtual desktops

Web Services

By clicking “Apps”, “... virtual desktops” or “Web Services” on the left side of web page you will see a list of resources that are available for you, which can be launched by clicking “OPEN”

Apps / Apps

Categories

All Apps

Virtual

Apps

LAB virtual desktops

LUT virtual desktops

Web Services

Apps

X



7-Zip File Manager

Horizon



OPEN



Access 2016

Horizon



OPEN



Acrobat Reader DC

Horizon



OPEN



Excel 2016

Horizon



OPEN



Google Chrome

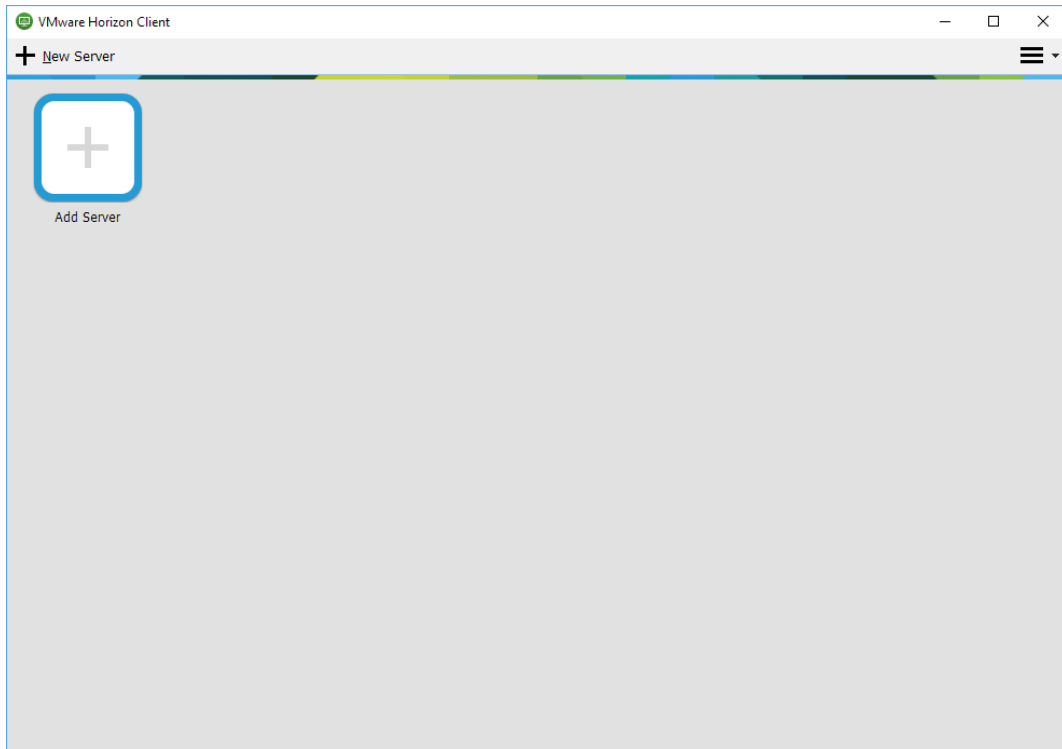
Horizon



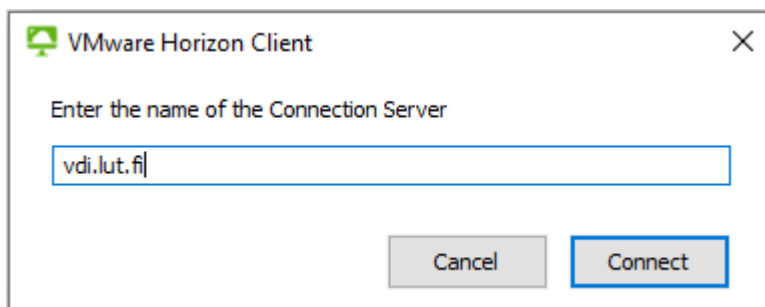
OPEN

Using LUT-VDI resources with VMware Horizon Client only

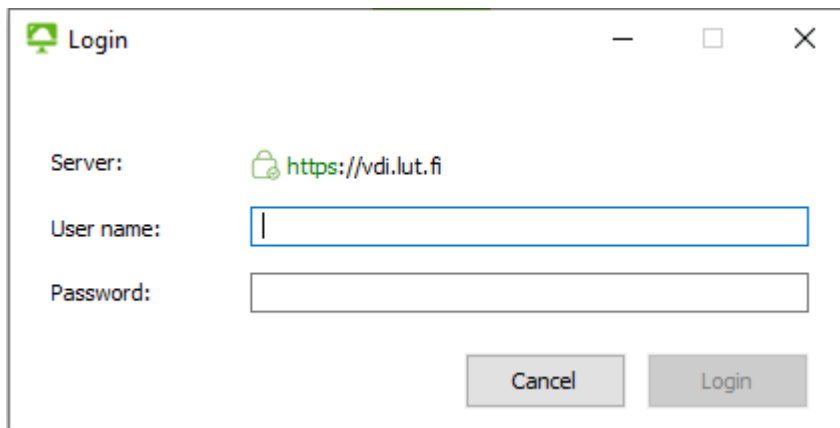
Start the client and double click “Add Server”.



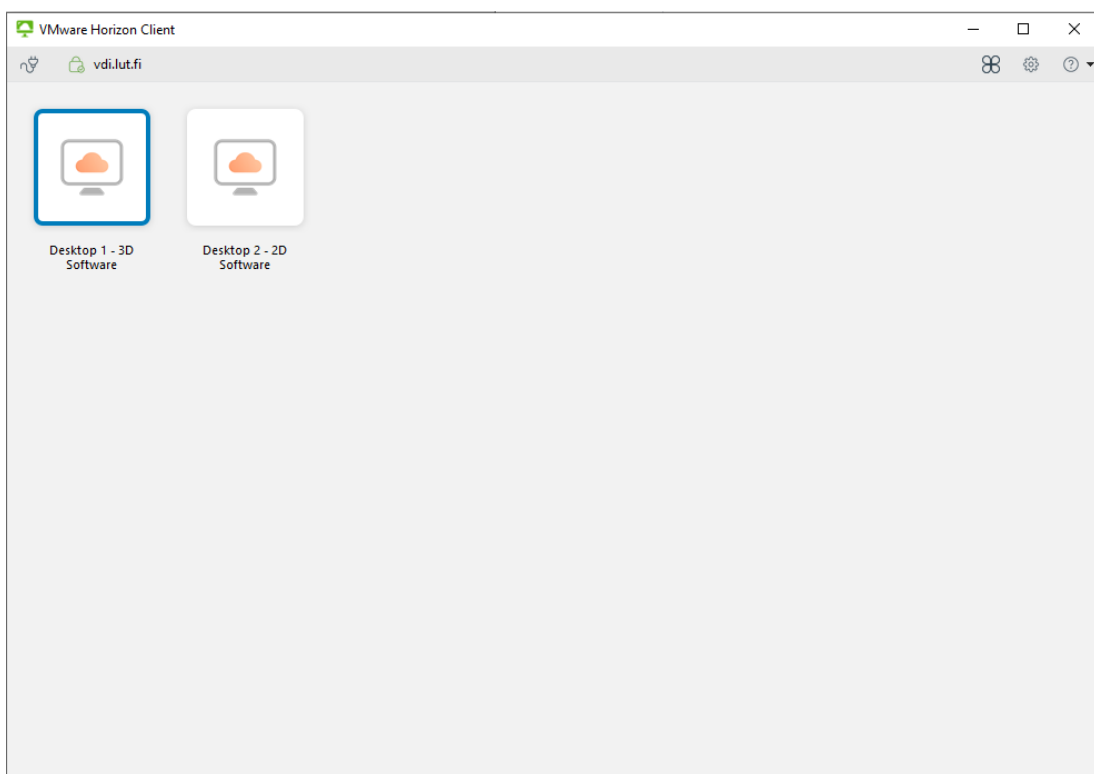
Type “vdi.lut.fi” as connection server name and click “Connect”.



After entering the name of the Connection Server and clicking “Connect” opens a login window where you must type your username and password. You can also use your e-mail address as user name.



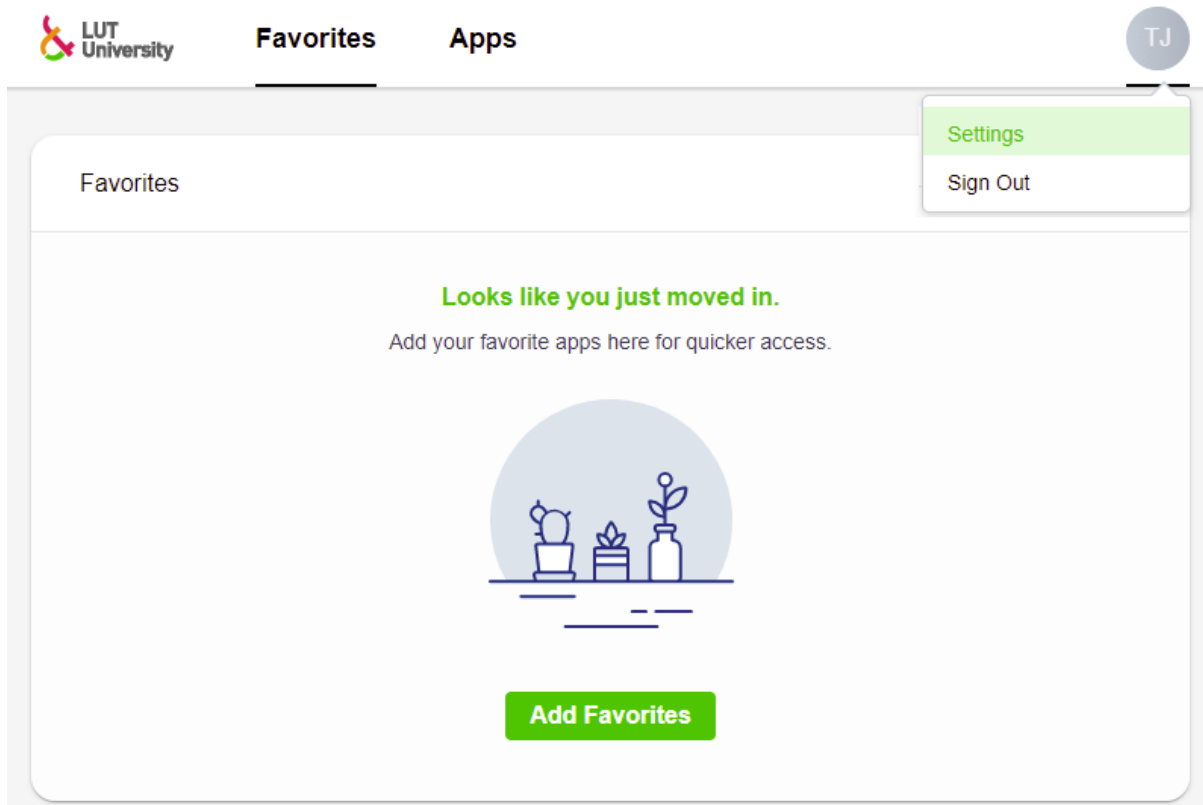
After login, all programs and desktops that are available for you are shown in VMware Horizon Client and can be launched by double clicking them.



Using LUT-VDI resources with a web browser without VMware Horizon Client

Log in to LUT-VDI web portal as in page 4.

Click your name alphabets in upper right part of the page and click “Settings”.



In Preferences click “Browser” icon and then click “UPDATE”.

Preferences

Horizon Remote Apps

How would you like to launch Horizon remote apps?



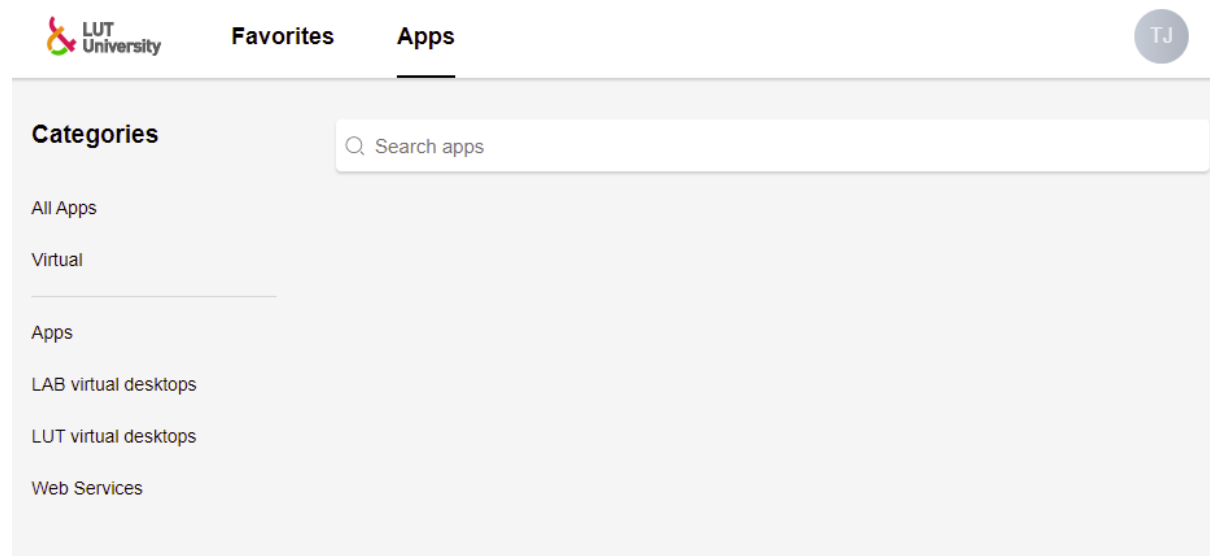
Horizon Client



Browser

UPDATE

Finally click “Apps” for navigating to back to the front page of portal.




Additional info

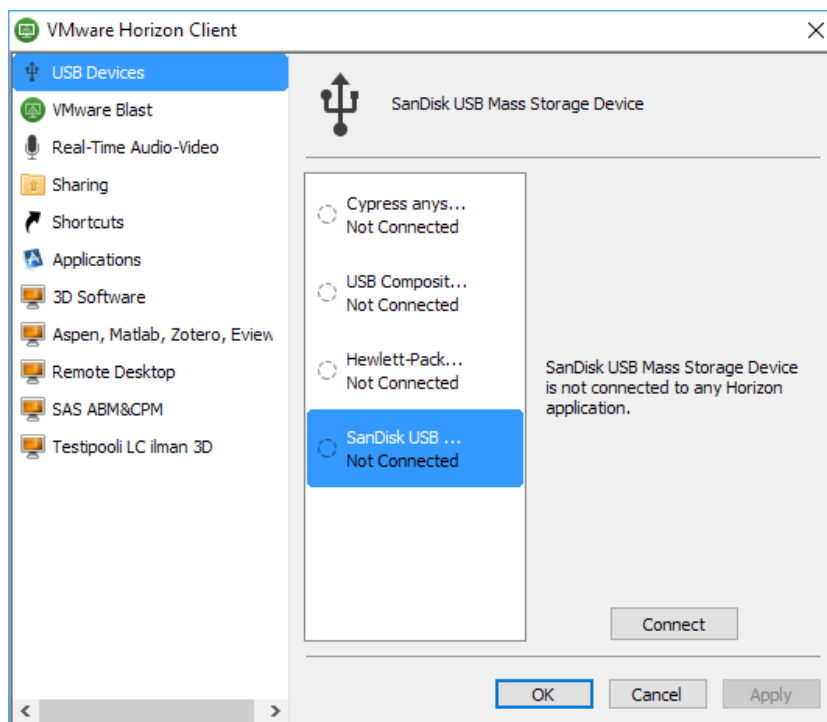
Different types of USB devices can be used with virtual desktops and applications, like flash drives and headsets.

You can also share folders from local computer, where VMware Horizon Client is installed. Local printers can also be used for printing with virtual machines and applications.

Connecting and using USB devices in VMware Horizon Client

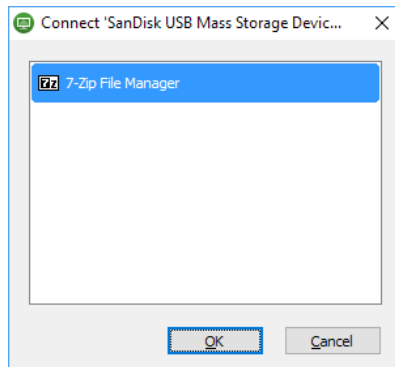
If you need to use for example a local USB printer or a flash memory stick with a virtual desktop or a program, follow the guidance below. **Please note that the USB device is not available on the host computer when it is used with Horizon Client.**

Go to settings by pressing  button in upper right corner of Horizon Client and choose “USB Devices” tab.

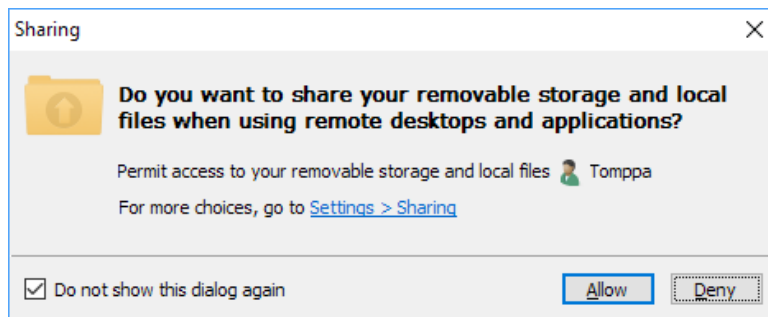


Choose the USB device and pick a desktop or a program where you want to attach the USB device and click “Connect”. You can connect multiple USB devices if needed.

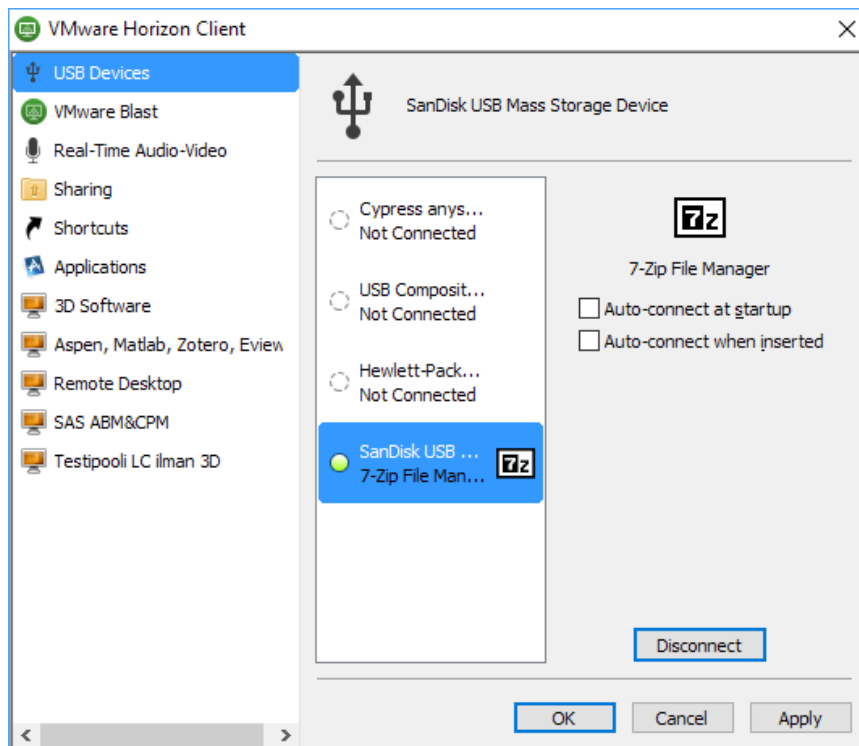
Finish connecting USB device by clicking “OK”



Connecting a flash drive for a first time a popup might appear. Click “Allow”.

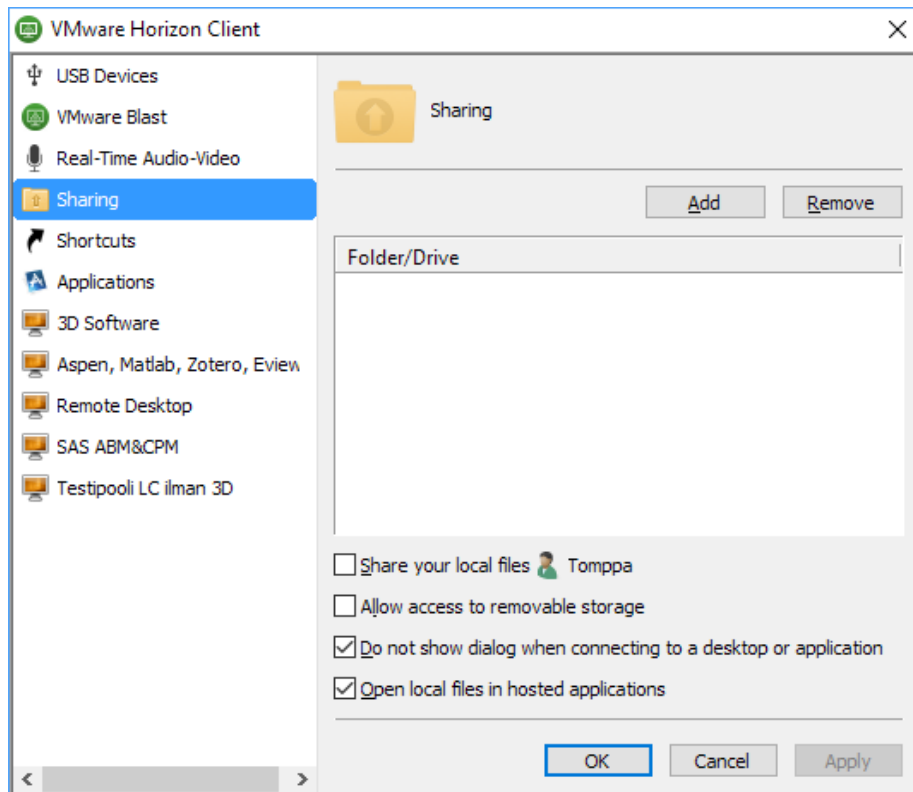


After use you can disconnect the USB device by clicking “Disconnect” button.

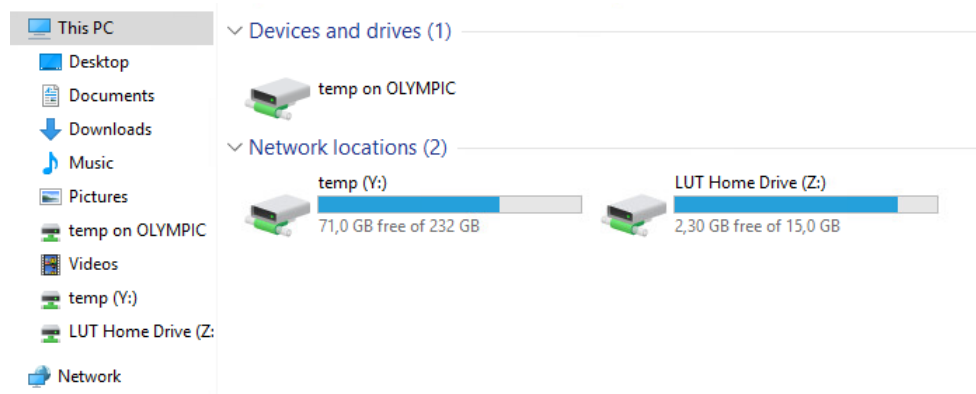


Share a folder from your host computer to a program or a virtual desktop

You can access host computer folders from the “Sharing” tab. Shared folders will be mounted as network drives. Click “Add”-button and choose a folder or folders that you want to share with a program or a desktop.

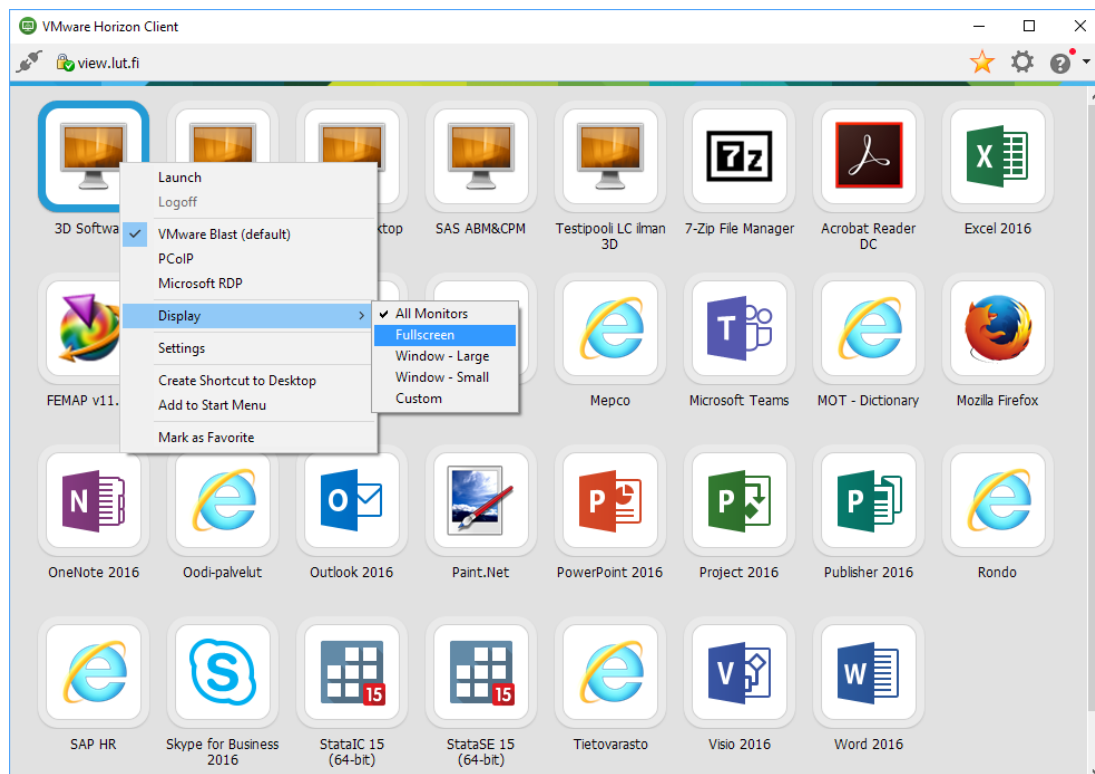


Example: Shared c:\temp –folder is mounted as Y: drive.



Changing display settings on virtual desktops

As a default, all desktops will utilize all monitors. You can select for example a “floating window” mode by choosing “Window – Large” or “Window – Small”. The selection will be remembered for later use.



You can resize windowed desktops or programs by dragging from a corner of a window.

In a desktop, sharing, USB and other settings can also be accessed from a Horizon Client window.

