

Refinitiv Eikon remote use guide

Instructions for using LUT VDI -portal and installing VMware Horizon Client can be found here:
<https://uni.lut.fi/en/web/lut.fi-eng/lut-remote-desktop>

Once you have installed VMware Horizon Client then open it and follow the instructions as below:

There are four virtual desktops for Eikon in LUT VDI environment. You can access them by using VMware Horizon Client with server "vdi.lut.fi". Use user names below for accessing the desktops. Don't use your personal LUT/LAB credentials!

Desktop:	User name:
<i>Eikon Student 1 – Remote Access</i>	<i>eikon.student1</i>
<i>Eikon Student 2 – Remote Access</i>	<i>eikon.student2</i>
<i>Eikon Student 3 – Remote Access</i>	<i>eikon.student3</i>
<i>Eikon Student 4 – Remote Access</i>	<i>eikon.student4</i>

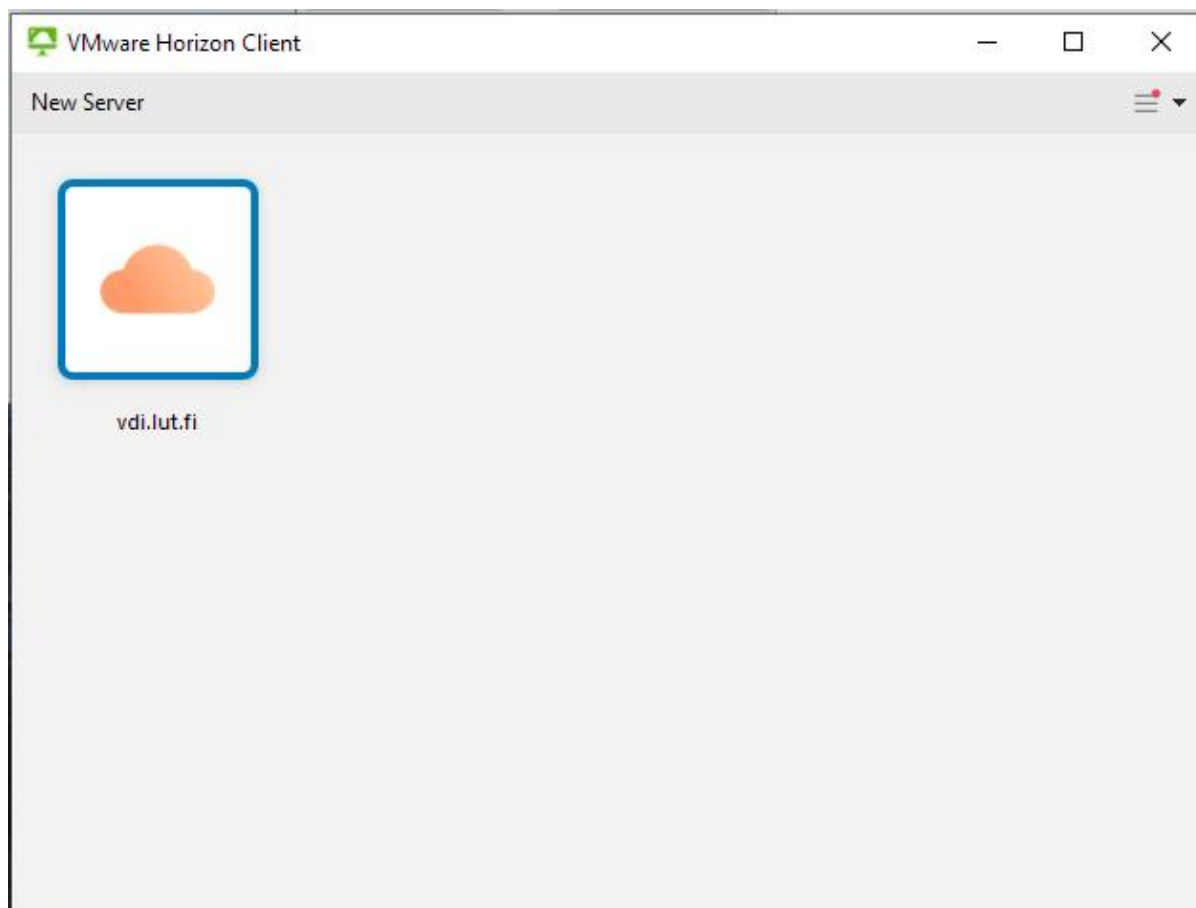
Passwords for log in credentials can be requested from Student IT Support Services – studenthelpdesk@lut.fi. Send the request using your LUT/LAB email.

<https://uni.lut.fi/en/studenthelpdesk>

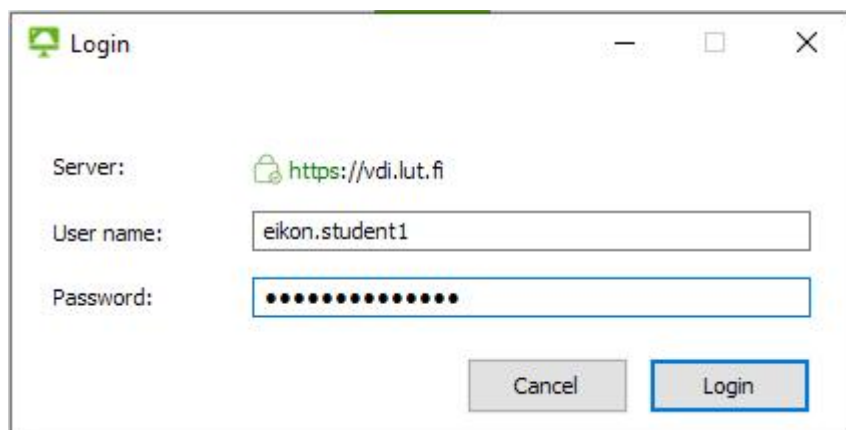
Passwords will be updated every 3 months. When your provided current passwords stop working, please request new ones.

Accessing Eikon remote desktops

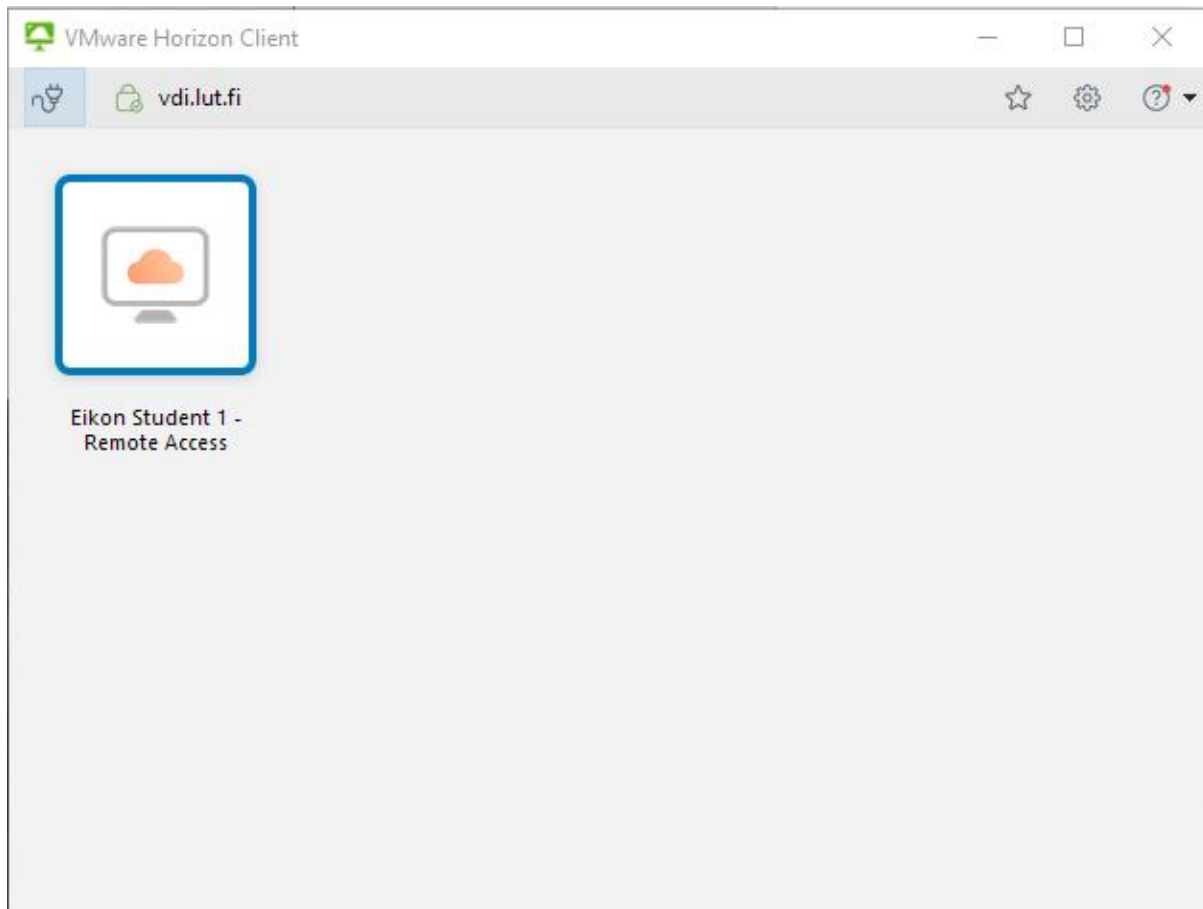
Open VMware Horizon Client and double click icon "vdi.lut.fi". If there is no server defined click "New Server" and type "vdi.lut.fi" (without quotation marks) as the name of the connection server.



Double click icon "vdi.lut.fi" and enter Eikon credentials to login window and click "Login".



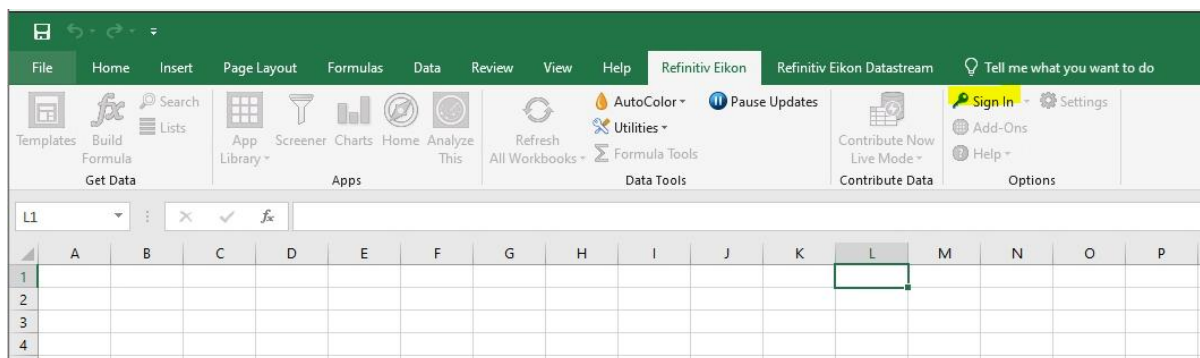
You can now connect to Eikon virtual desktop by double clicking the virtual desktop icon below.



After virtual desktop has been opened you will find "Thomson Reuters Eikon"-icons on desktop. It is recommended to use "Thomson Reuters Eikon – Microsoft Excel" for data downloading.



After opening "Thomson Reuters Eikon – Microsoft Excel" sign in to Eikon by choosing "Refinitiv Eikon"-tab and click "Sign in"-button



Once the status is "Online" then go to menu: Refinitiv Eikon Datastream and use one of these requestions

Static Request = for downloading static (cross-sectional data of multiple datatypes at any point of time.

Time series Request = for downloading time series of a single or multiples of stocks or other instruments

Find Series = for downloading either the list of instruments (e.g. all stocks listed in one exchange or in index) or list of Datatypes (e.g. price, return, volume, etc.). Note: This feature is handy for downloading the codes of all instruments which you can use in Time Series request to download bulk data of all instruments at the same time. You can copy all codes as column headers and refer to those cells in time series request menu, select one data type, enter the starting and ending dates, and set the frequency. It is recommended to download one variable at one time for all instruments, save those in a different file and then download other variable (datatype). You cannot download multiple variables for multiple instruments at one time.

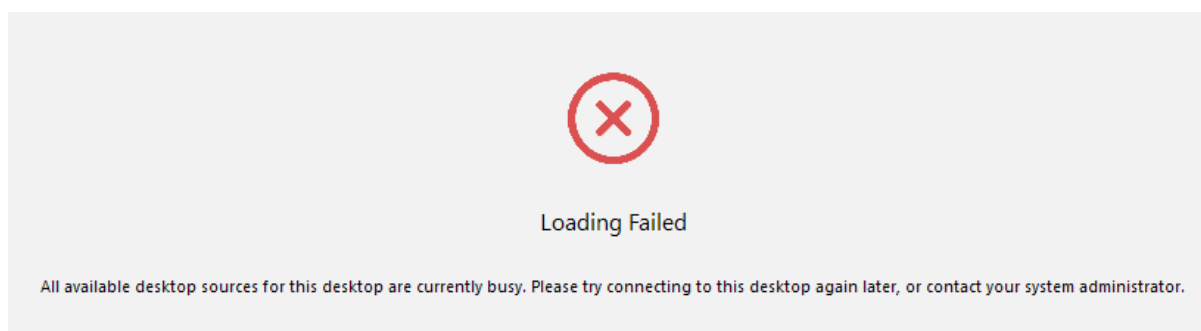
Time Series request is by far the most commonly used menu in Eikon. You can use templates, utilities, charts, and other menus as well. The 'help' menu is useful to get quick solution of a problem.

Important to note:

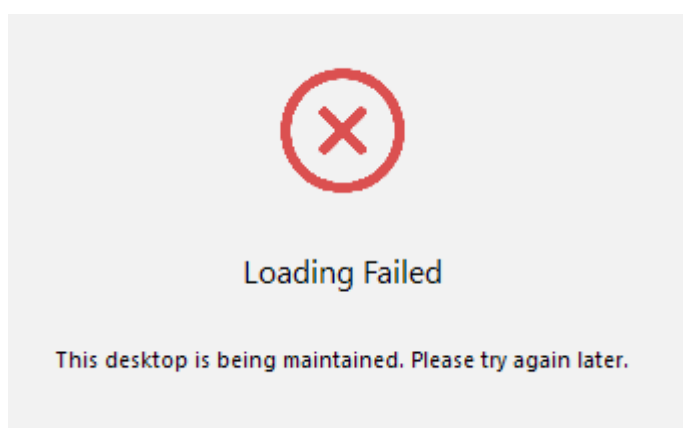
After downloading data, you can either email files to your own inbox or save them to a network drive, such as LUT OneDrive. Do not save them on virtual desktop, like in to "Documents" folder, as all user files will be erased after logging off from desktop.

Frequent error messages

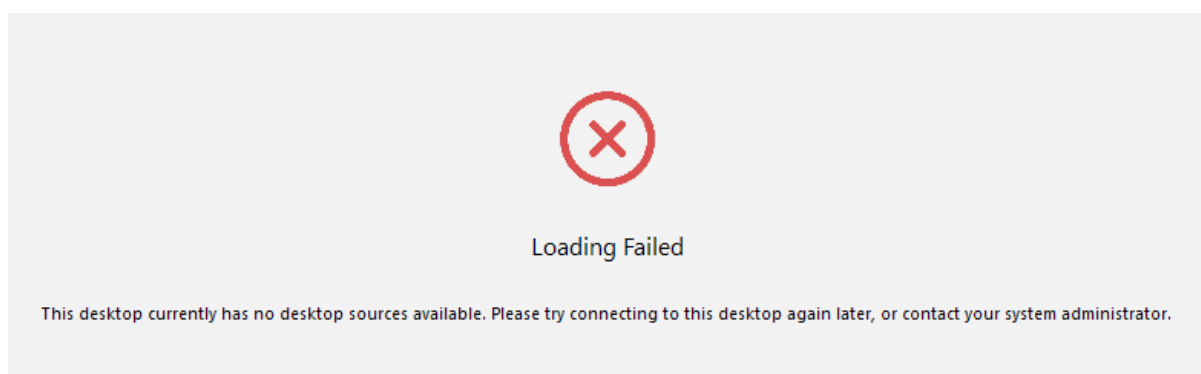
Desktop is being used by somebody else. Try another desktop:



Desktop is being recreated due to previous user logoff. It takes usually about a minute:



Desktop is being prepared due to recreating:



Other information

If you're using a computer provided by LUT you might need to switch off "Log in as current user"-function to disable automatic logon with your LUT credentials:

